

BOARD OF DIRECTORS

DR. ELLEN JEFFERSON
Executive Director

AUSTIN PETS ALIVE!
Parent Organization: 501c3

AMERICAN PETS ALIVE!
National Outreach & Education Division

HUMAN ANIMAL SUPPORT SERVICES (HASS)

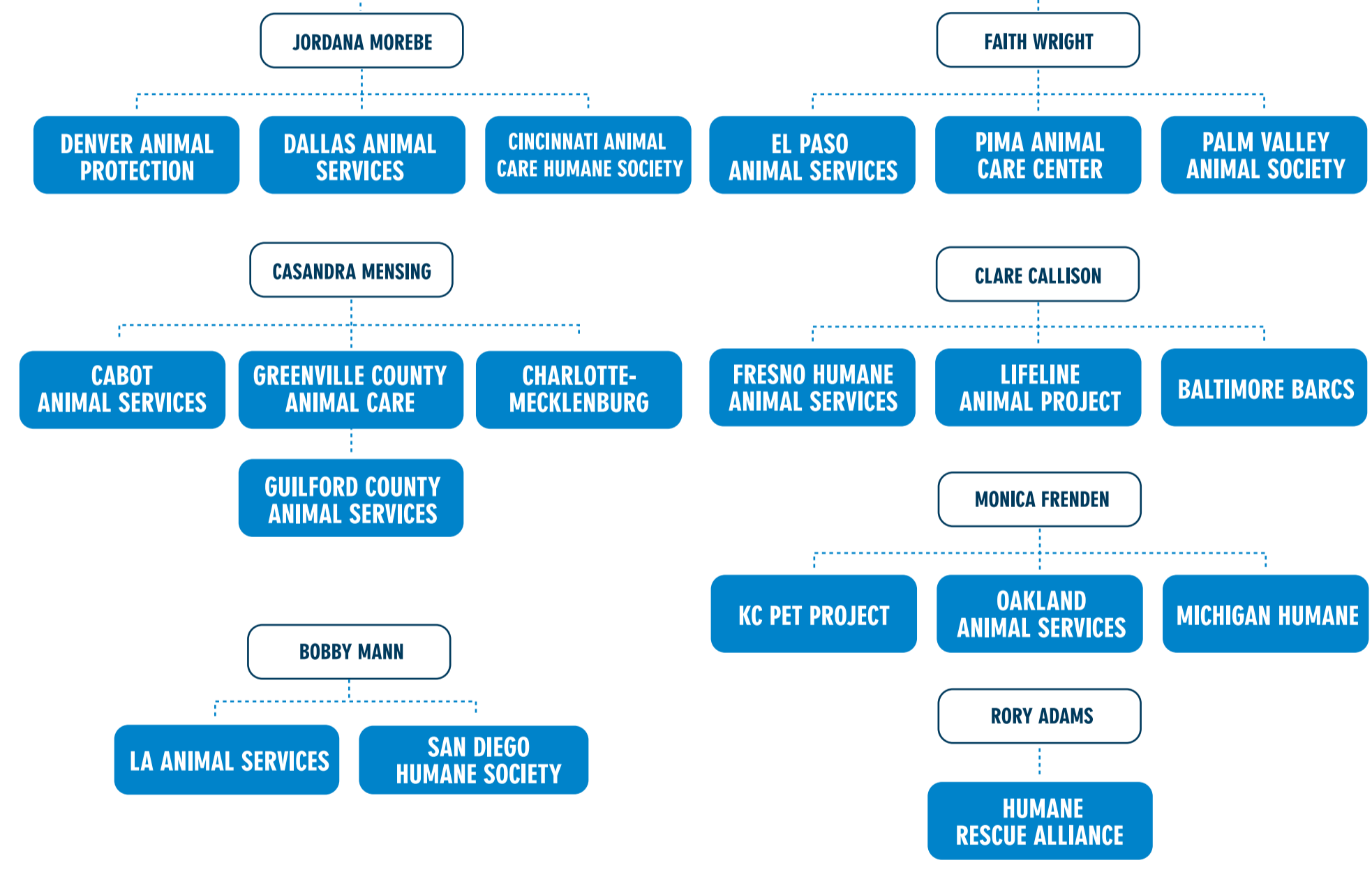
MADDIE'S® LIFESAVING ACADEMY CRISIS/EMERGENCY RESPONSE RESOURCES CONFERENCE

DIVERSITY, EQUITY & INCLUSION ADVISORY GROUP

EXECUTIVE COMMITTEE
Dr. Ellen Jefferson, Kristen Hassen-Auerbach, Diaz Dixon, Gina Knepp, Chetana Mirle & Lisa LaFontaine

BOBBY MANN
Maddie's® HASS Pilot Director

TIER 1 PILOT SHELTERS



TIER 2 PILOT SHELTERS

Carroll County Animal Services, Bampton Animal Services, Brenham Animal Services, Humane Society of Sedona, Florence Lauderdale Animal Shelter, Baytown Animal Services, Rochester Animal Services, Norfolk Animal Care, Indianapolis Animal Care Services, London Animal Care Centre, Chico Animal Services, Kauai Humane Society, Fort Bend County Animal Services, Central Missouri Humane Society, Riverside County Animal Services, South Suburban Humane Society, Panhandle Animal Shelter

- LOST AND FOUND
- KEEPING FAMILIES TOGETHER
- SELF-REHOMING
- INTAKE-TO-PLACEMENT
- SHELTER
- PUBLIC SAFETY & FIELD SERVICES
- COVID & CRISIS RESPONSE
- FOSTER
- TELEHELP
- CASE MANAGEMENT
- VOLUNTEERS
- PARTNERSHIPS
- INNOVATE THE FIELD
- GOVERNMENT SUPPORT
- EQUITY & INCLUSION

WORKING GROUPS

